

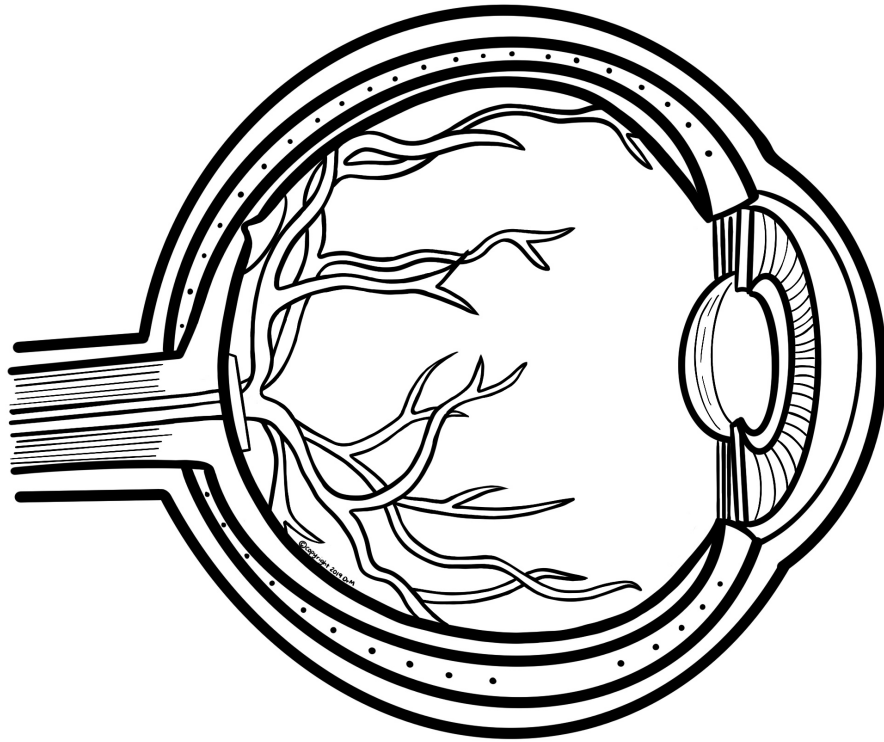
• Eye and Ear •

The Structures of the Eye

Structure	Location	Function
Choroid		
Lens		
Pupil		
Cornea		
Aqueous humor	anterior cavity	
Iris		
Sclera		
Fovea Centralis		
Vitreous humor	posterior cavity	
Retina		
Optic nerve		
Muscles that focus The lens (ciliary muscles)		
Blind spot		
* Muscles that move The eye: 1. Lateral rectus 2. Medial rectus 3. Superior rectus 4. Inferior rectus 5. Inferior oblique 6. Superior oblique		
* Rods		
* Cones		
* Conjunctiva		

Location: Inner, Middle, external, back of eyeball
 (choose from these) ←

* = not labeled on diagram pg. 2

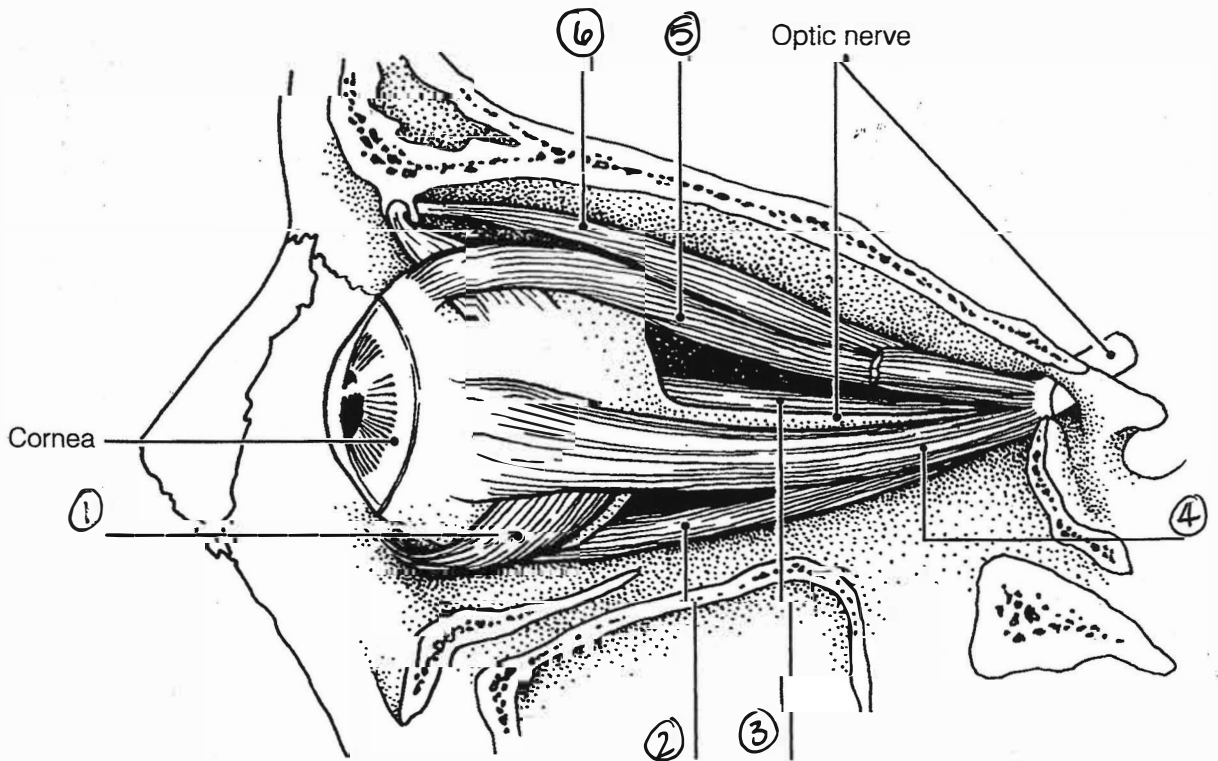


Identify each of the eye muscles indicated by leader lines in Figure 8-1. Color code and color each muscle a different color. Then, in the blanks below, indicate the eye movement caused by each muscle.

*Color

Eye muscles

- | | |
|---|---|
| <input type="radio"/> 1. Superior rectus _____ | <input type="radio"/> 4. Lateral rectus _____ |
| <input type="radio"/> 2. Inferior rectus _____ | <input type="radio"/> 5. Medial rectus _____ |
| <input type="radio"/> 3. Superior oblique _____ | <input type="radio"/> 6. Inferior oblique _____ |



Structures of the Ear

Structure	Location	Function
Semicircular canals		
Auricle (pinna)		
External auditory canal		
Tympanic membrane (eardrum)		
Malleus (hammer)		
Stapes (stirrup)		
Incus (anvil)		
Eustachian tube		
Oval window *		
Round window *		
Cochlea		
Perilymph *		
Endolymph *		
Organ of Corti		
Middle ear		
Inner ear		
Outer ear		

Location: inner, middle, outer

-(Choose from these)

* = not labeled on diagram

The Human Ear

⊗ Use terms from chart on p. 3 to label

