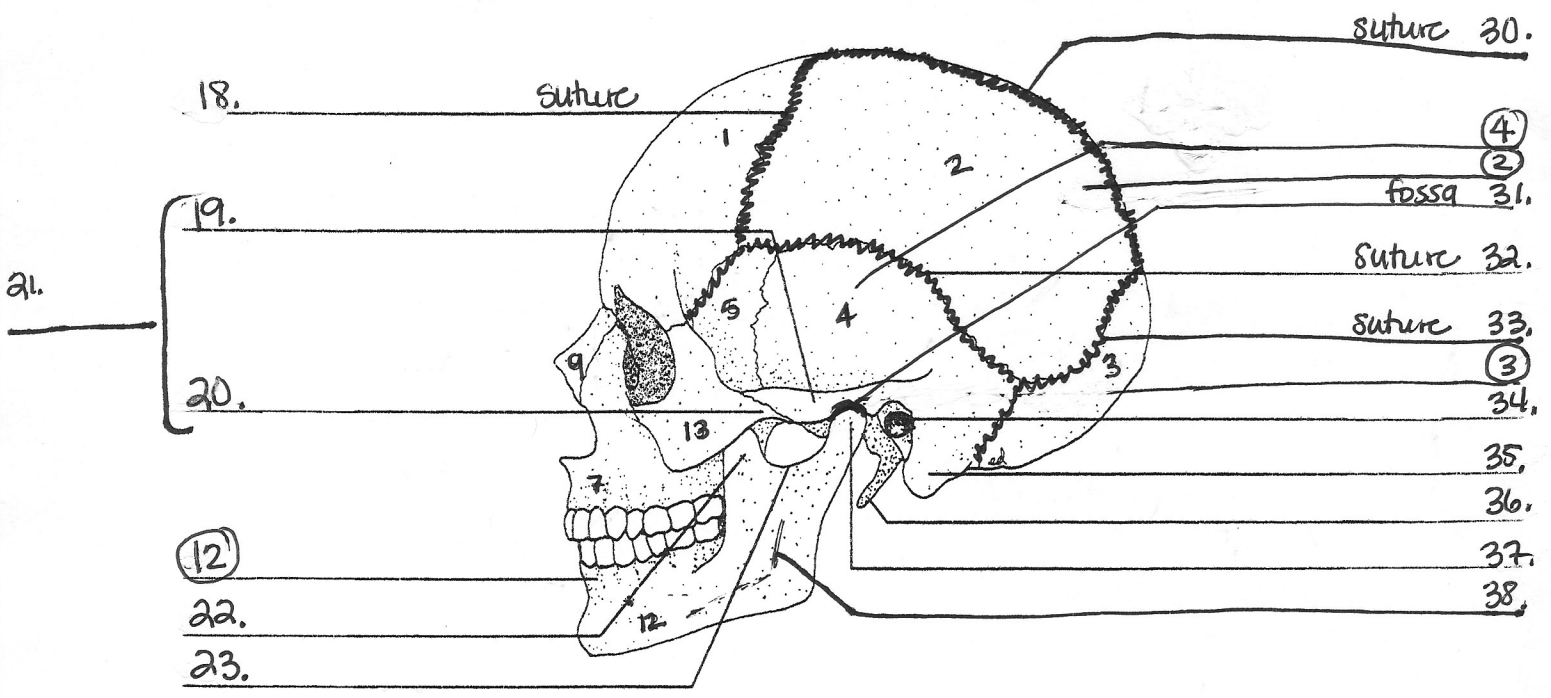
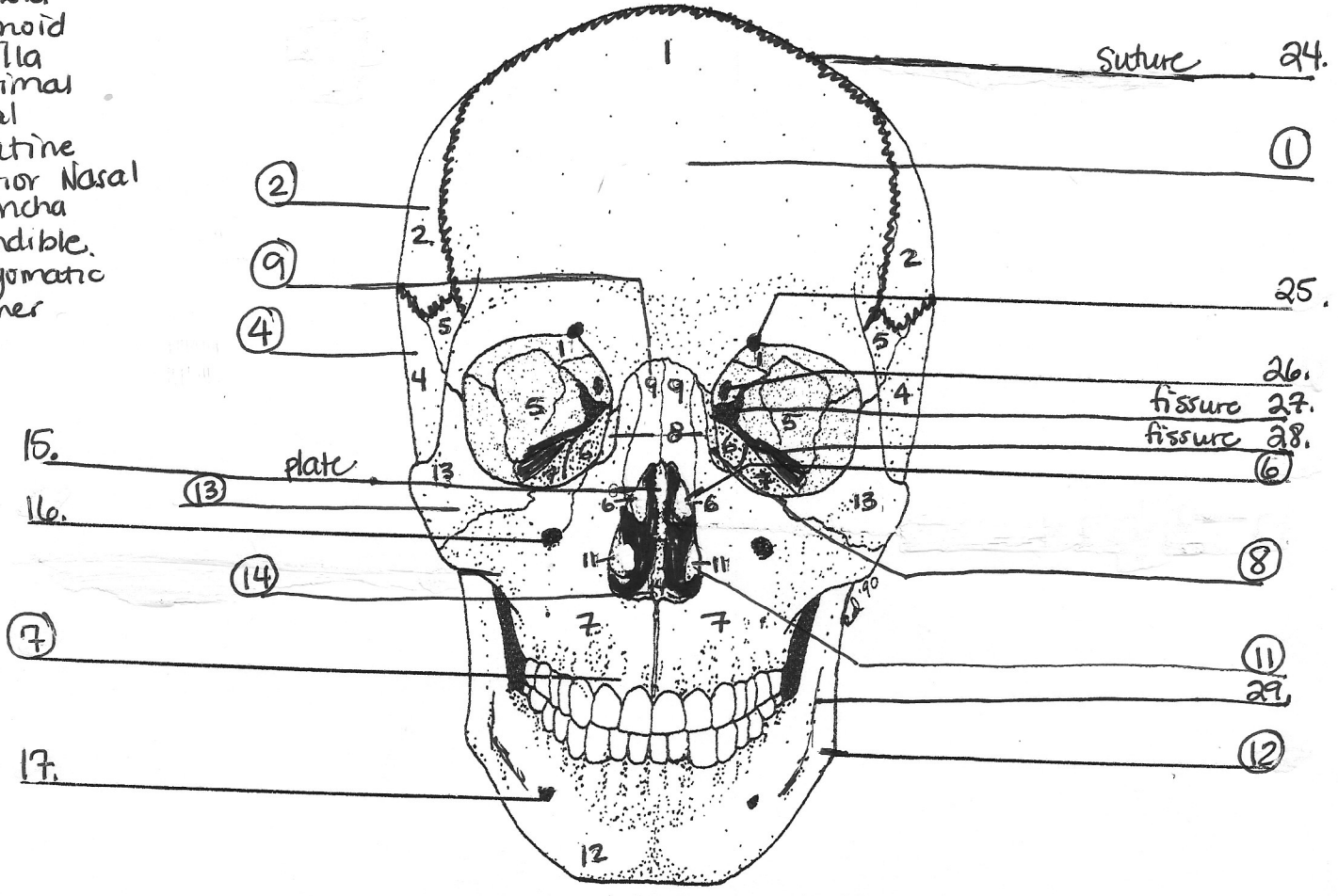
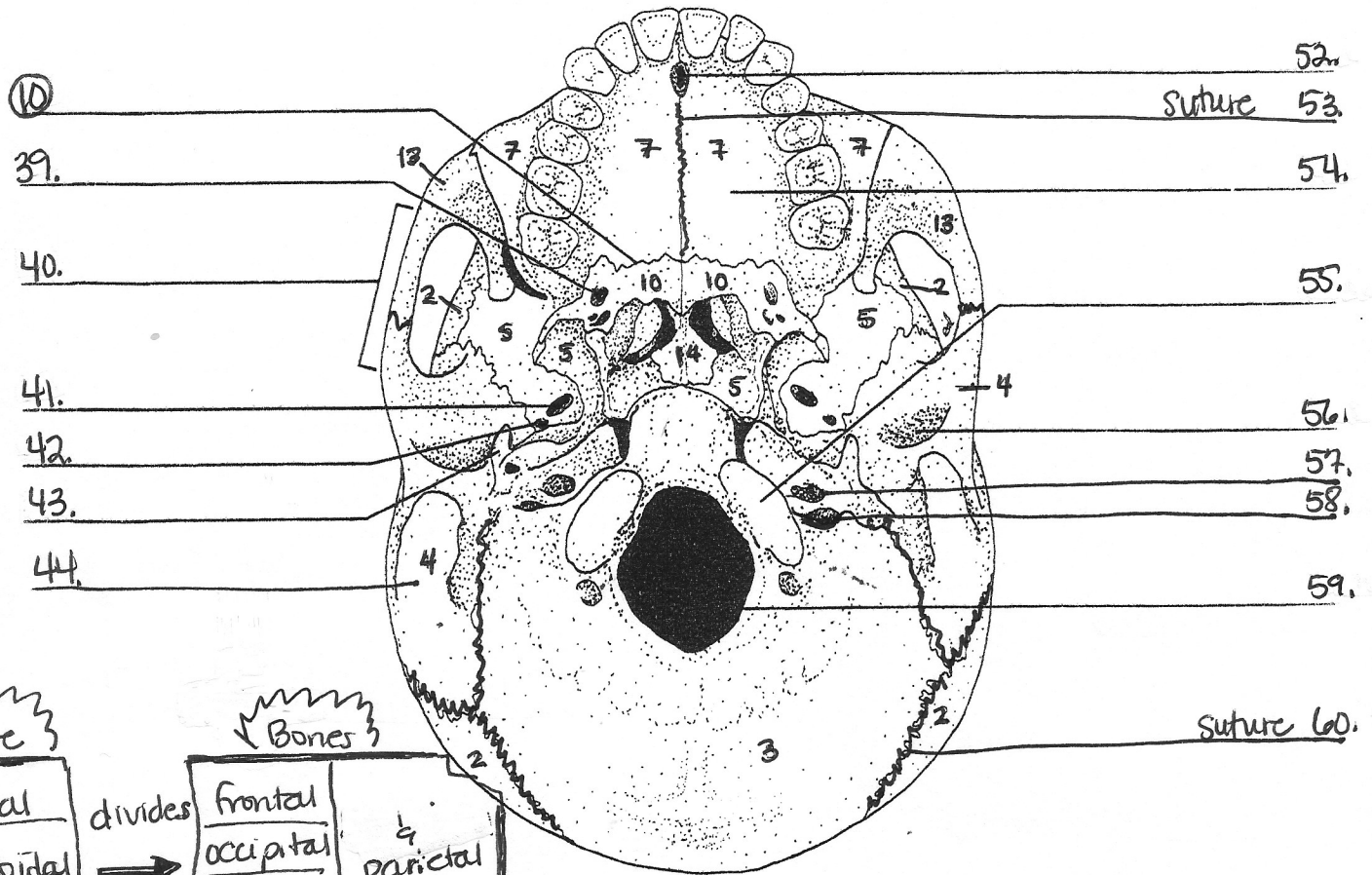


~ Skull ~

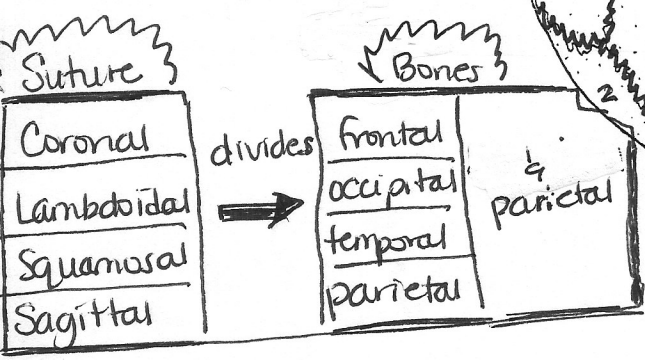
Key: to bones

- 1-Frontal
- 2-Parietal
- 3-Occipital
- 4-Temporal
- 5-Sphenoid
- 6-Ethmoid
- 7-Maxilla
- 8-Lacrimal
- 9-Nasal
- 10-Palatine
- 11-Inferior Nasal Concha
- 12-Mandible
- 13-Zygomatic
- 14-Vomer

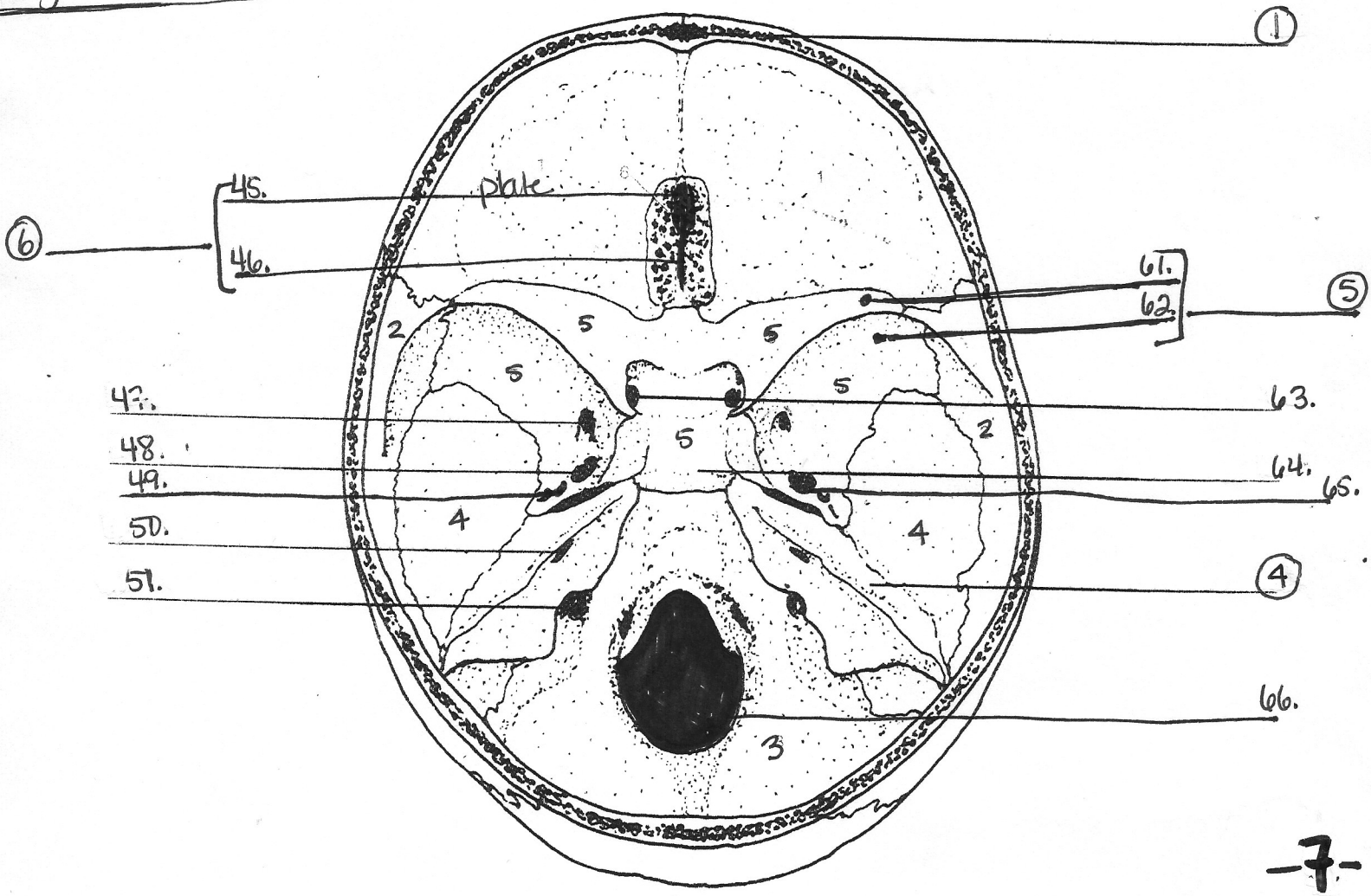




52.
suture 53.
54.
55.
56.
57.
58.
59.



suture 60.



45.
46.

47.
48.
49.
50.
51.

61.
62.

63.
64.
65.

66.

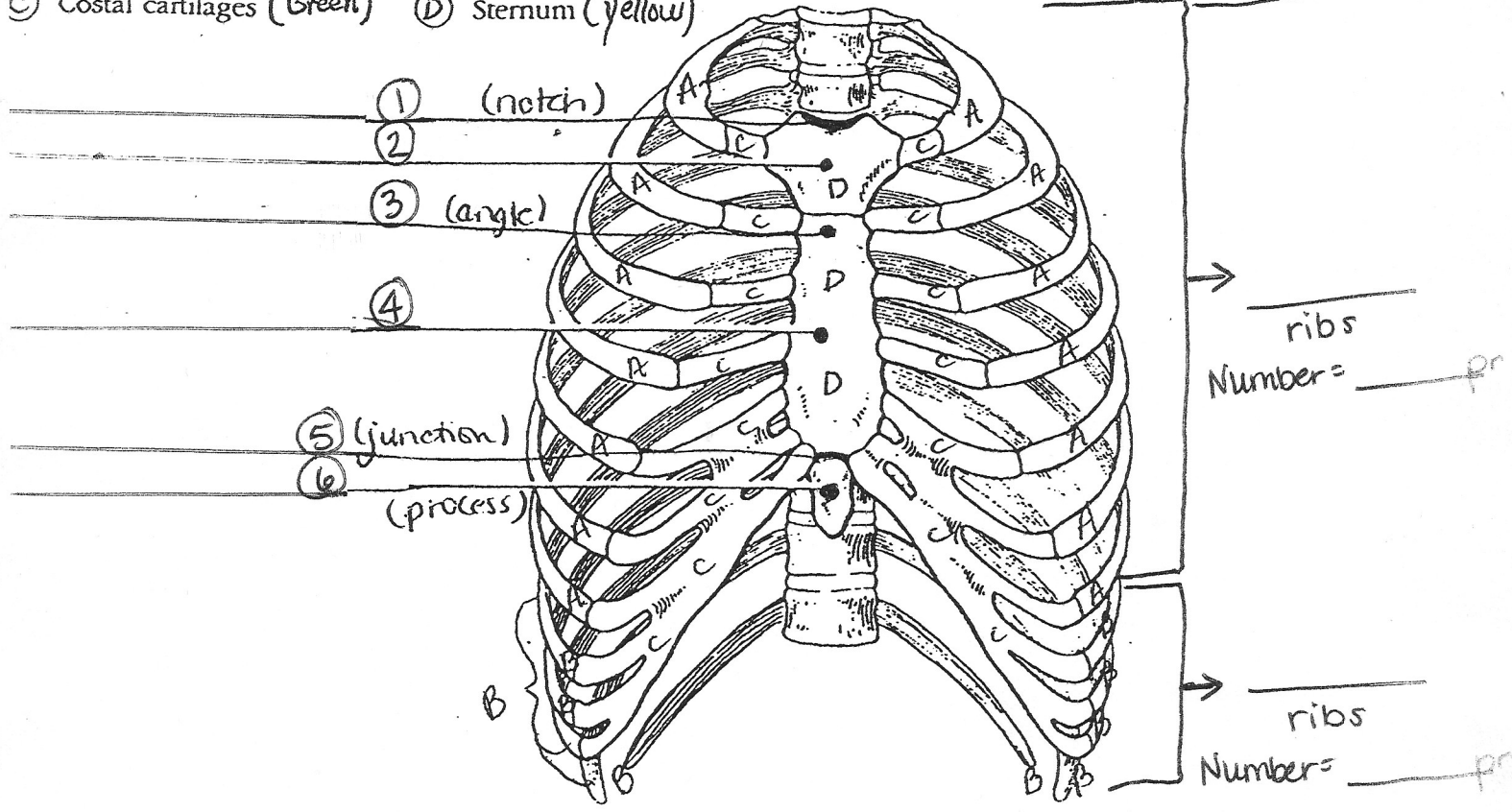
①
④
⑤
⑥

Thoracic (Rib) Cage

This is an anterior view of the bony thorax. Select different colors to identify the structures below and color the coding circles and corresponding structures. Then label the subdivisions of the sternum indicated by leader lines.

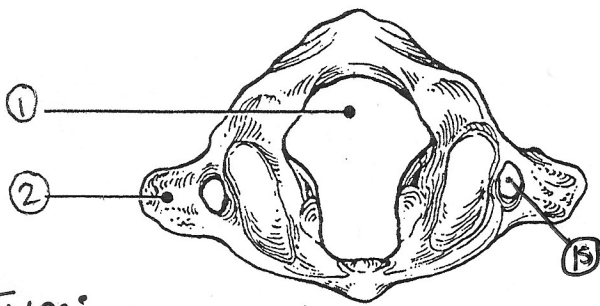
- A) All true ribs (Blue)
- B) All false ribs (Red)
- C) Costal cartilages (Green)
- D) Sternum (Yellow)

Remember:
True ribs connect directly to sternum. (vertebrosternal)
False ribs connect to each other or only to vertebral column. (vertebrochondral)

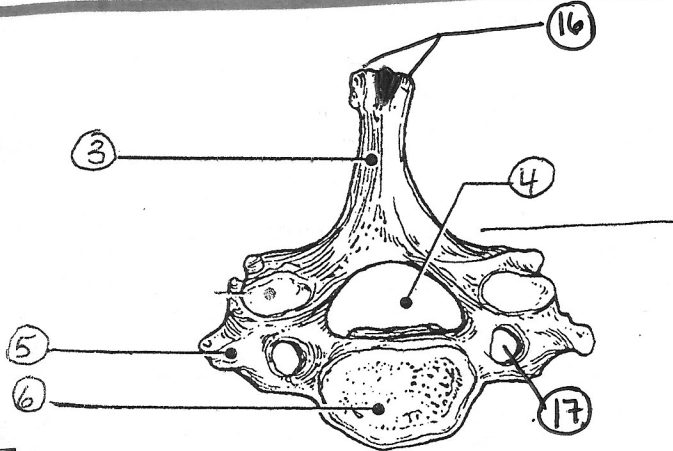


Complete the following statements referring to the bony thorax by inserting your responses in the answer blanks.

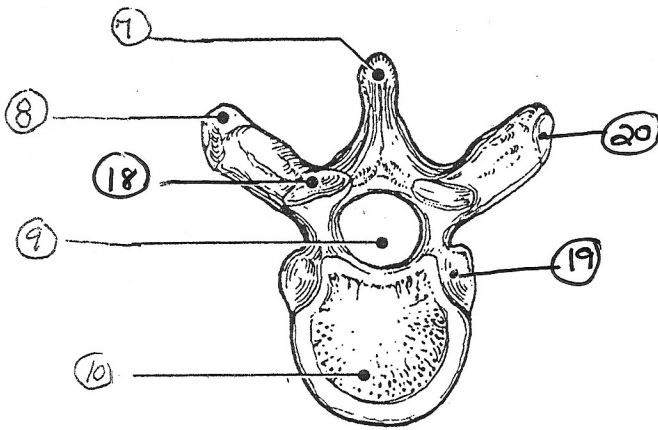
- _____ 1. The organs protected by the thoracic cage include the (1) _____ and the (2) _____. Ribs 1 through 7 are called (3) _____ ribs, _____ 2. whereas ribs 8 through 12 are called (4) _____ ribs. Ribs 11 and _____ 3. 12 are also called (5) _____ ribs. All ribs articulate posteriorly with the (6) _____, and most connect anteriorly to the (7) _____, _____ 4. either directly or indirectly. _____ 5. The general shape of the thoracic cage is (8) _____.
- _____ 6.
- _____ 7.
- _____ 8.



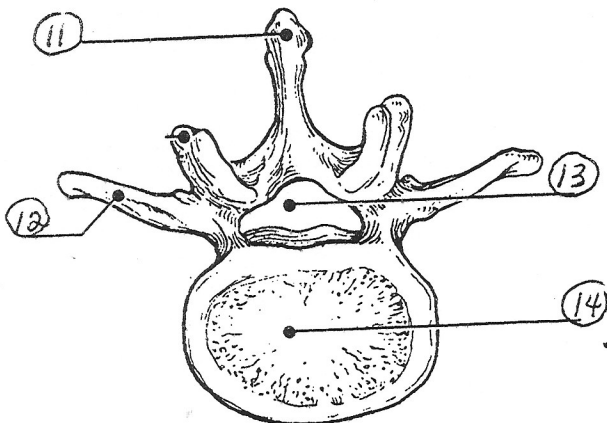
Type: _____



Type: _____

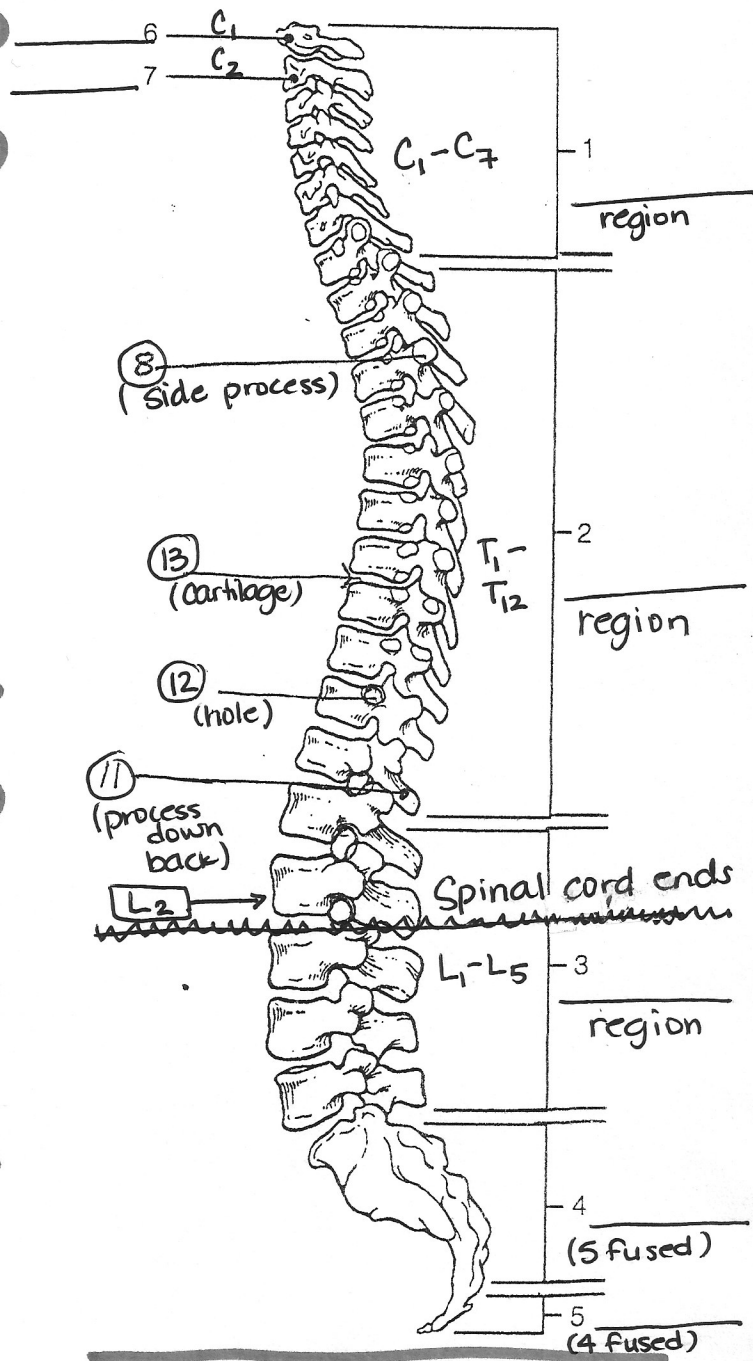


Type: _____



Type: _____

B A C K B O N E



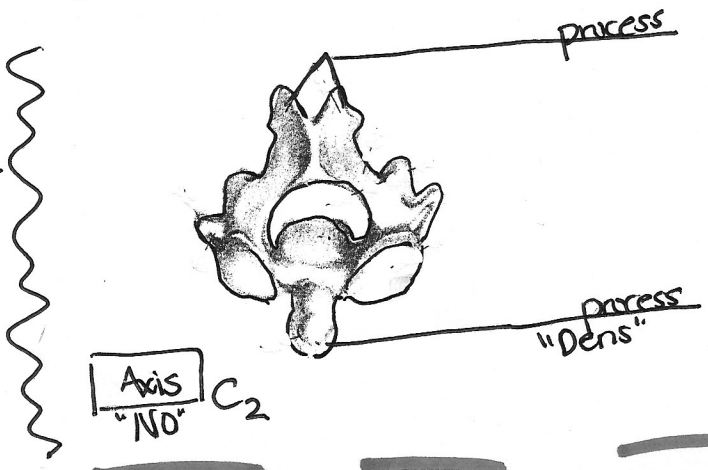
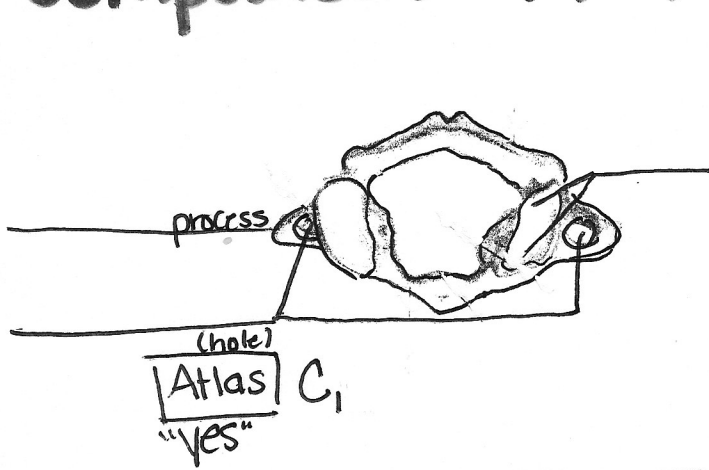
Color: Regions/Vertebrae

- Cervical - blue
- Thoracic - green
- Lumbar - red
- Sacral - orange
- Coccyx - yellow

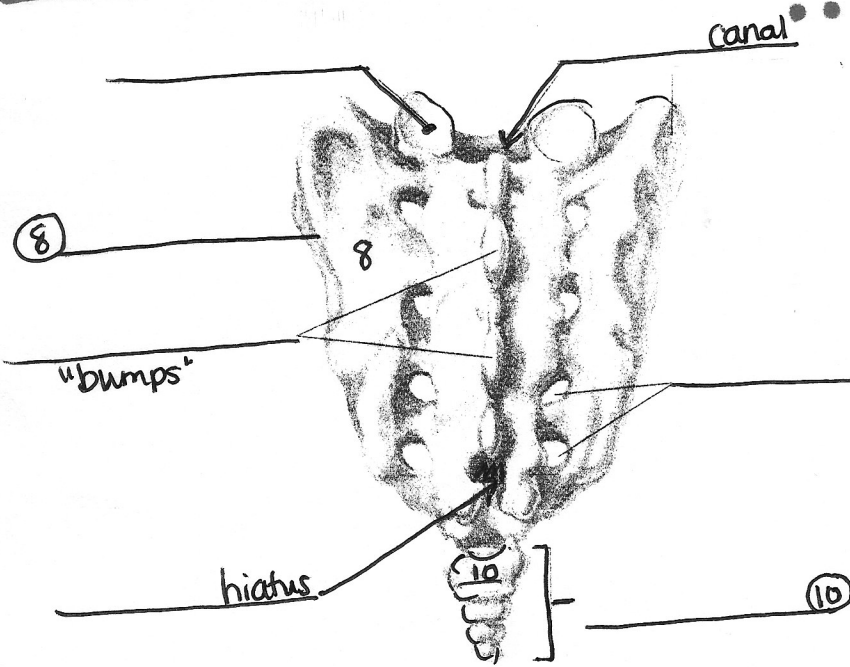
Structures: (on individual vertebrae)

- body - purple
- spinous process - pink
- transverse process - brown
- vertebral foramen - light blue

• Comparison - Atlas v. Axis

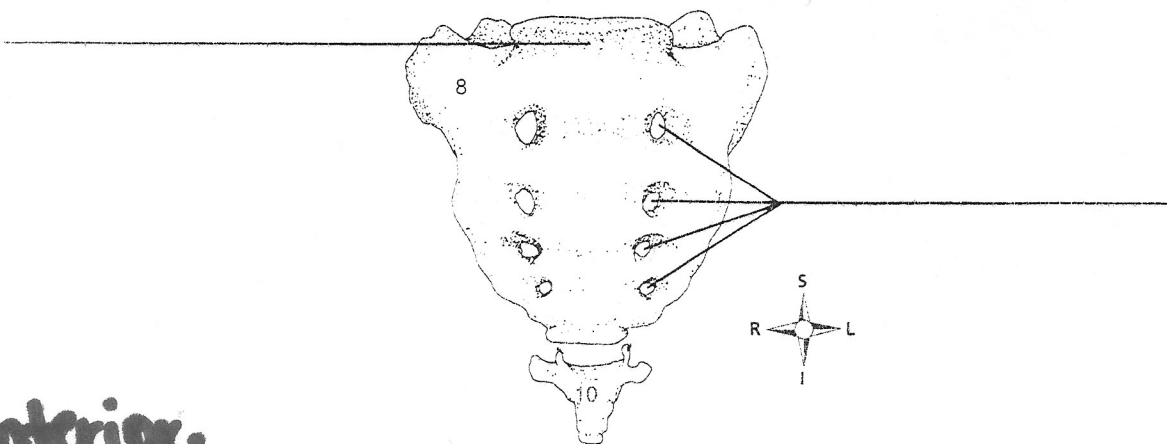


• Sacrum •



- Color:
- Sacrum (8) - blue
 - Coccyx (10) - green
 - Superior articular process - yellow
 - tubercle of median sacral crest - red
 - sacral hiatus - brown
 - Sacral foramen - pink
 - Sacral promontory - purple

• Posterior •



• Anterior •