

• Pelvis •

(A) Iliac crest (green)

(B) Sacrum (pink)

(C) Anterior superior iliac spine (blue)

(D) Ischial spine (yellow)

(E) Acetabulum (red)

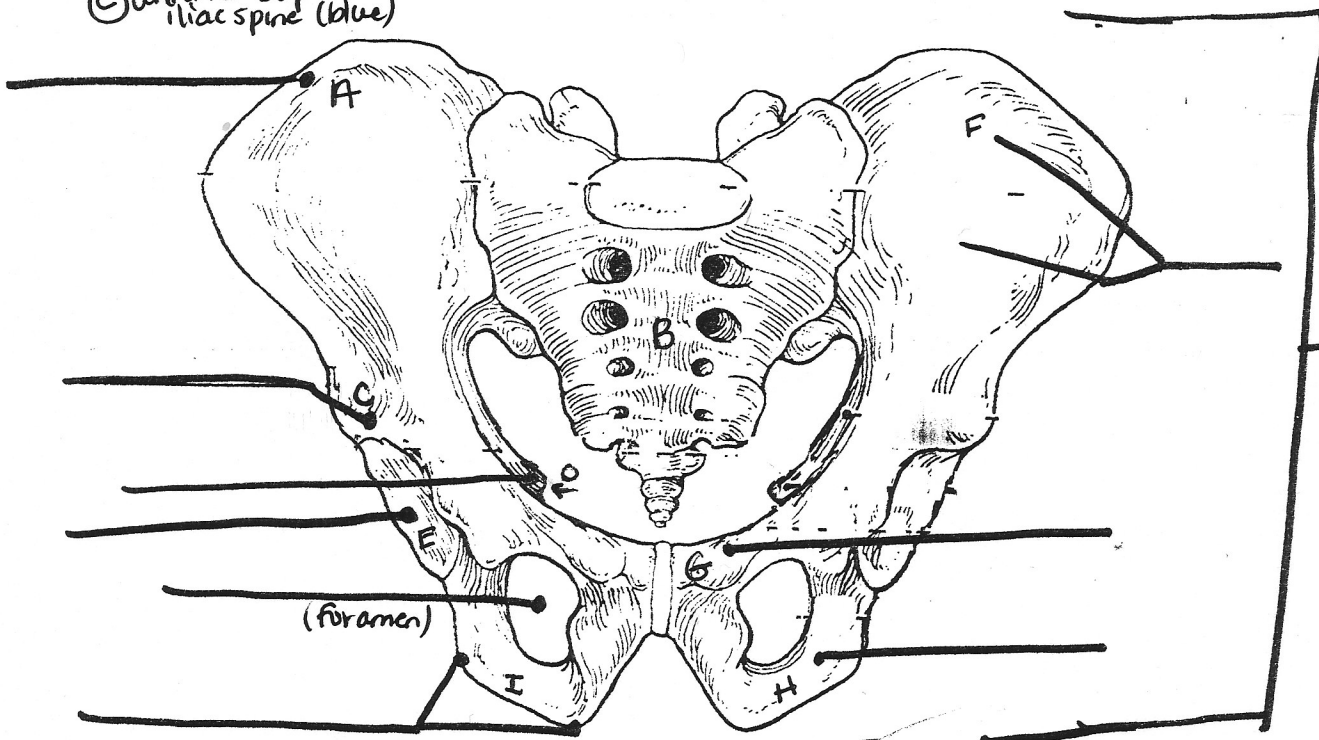
(F) Ilium (orange)

(G) Pubis (light blue)

(H) Ischium (light green)

(I) Ischial tuberosity (brown)

Coxal bone



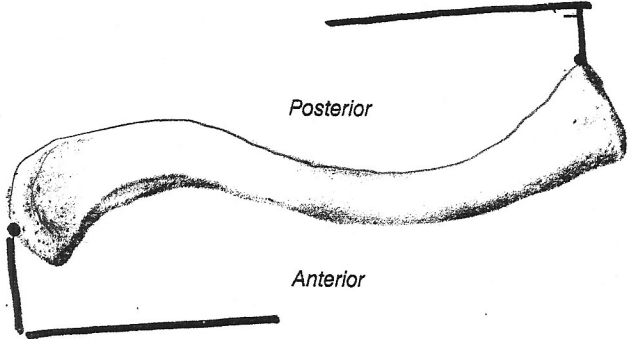
Coxal
(OS coxae)

⊕ posterior superior iliac spine not shown
⊕ iliac fossa not shown

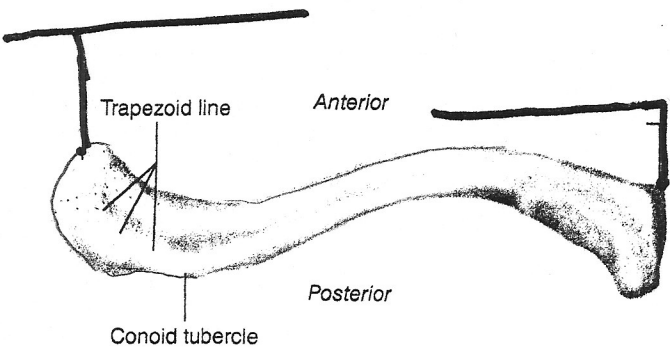
• Clavicle •

Color:

Sternal end = red
Acromial end = blue



(b) Right clavicle, superior view



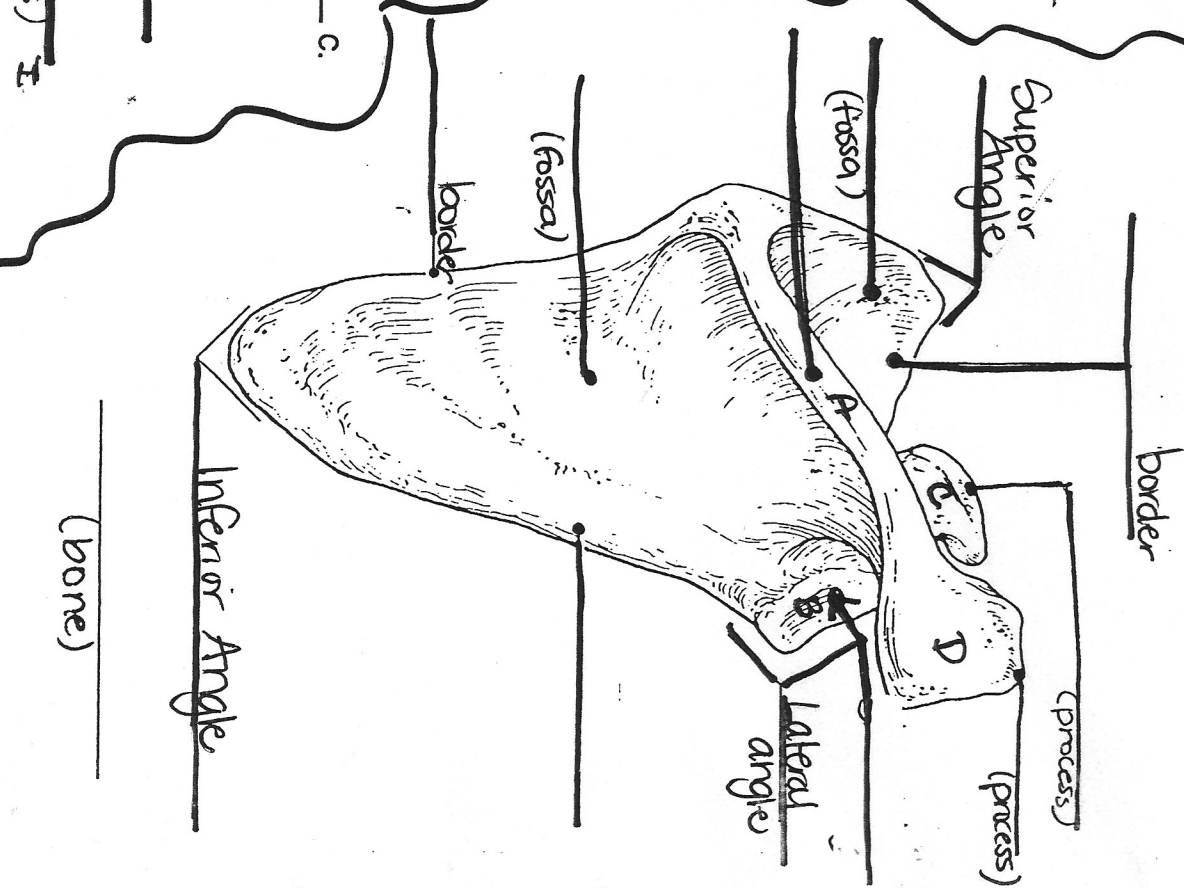
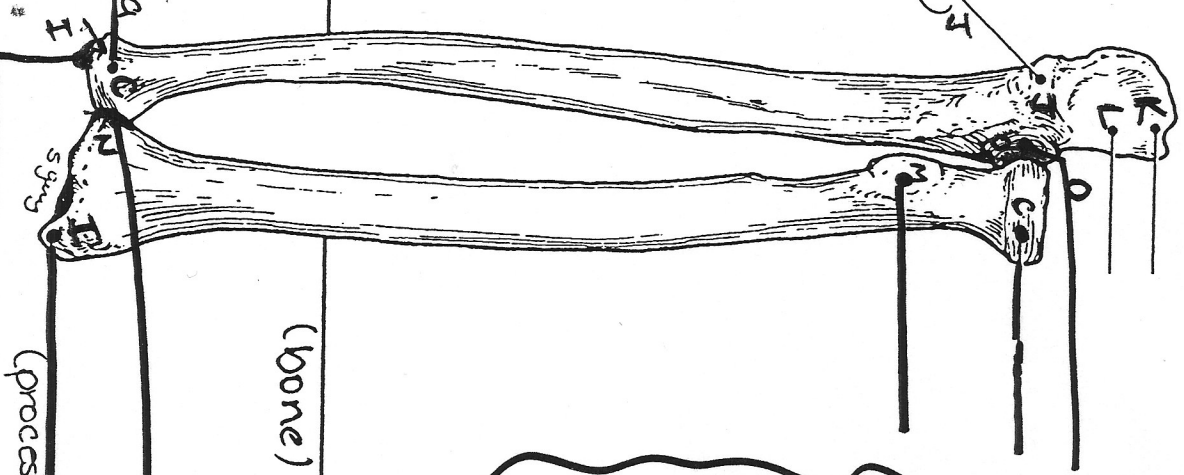
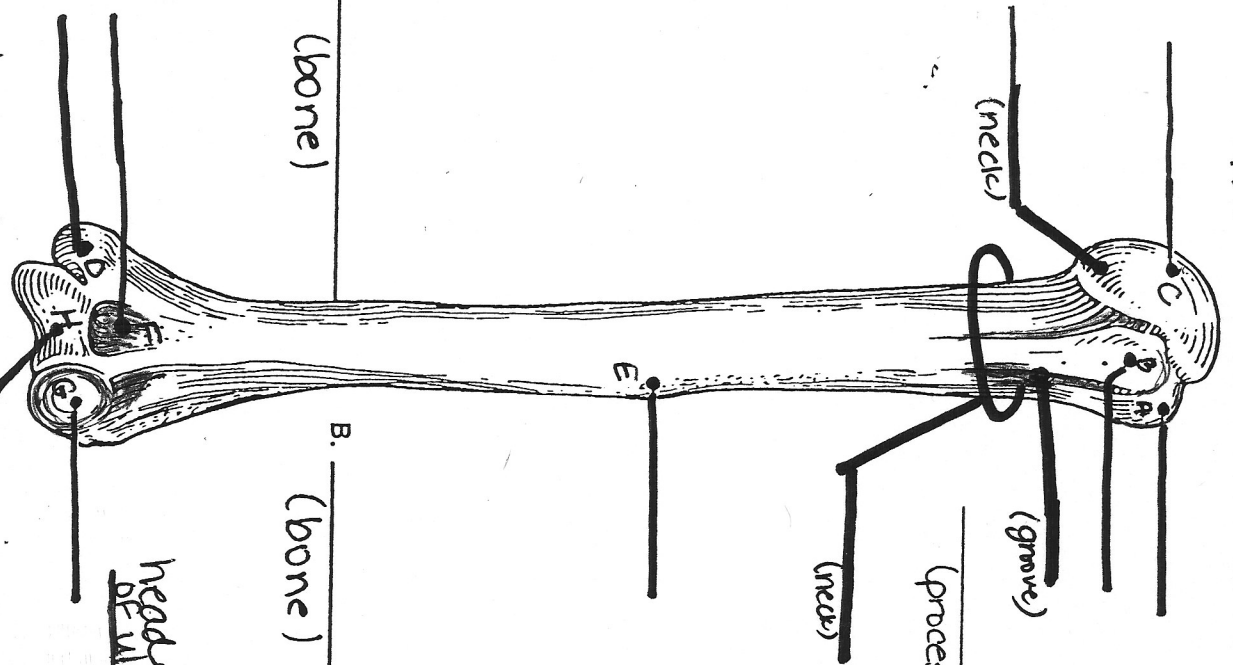
(c) Right clavicle, inferior view

• Appendicular Skeleton •

Anterior View - **Humerus** -

Anterior View ... **Ulna / Radius** ...

Posterior View ***Scapula***

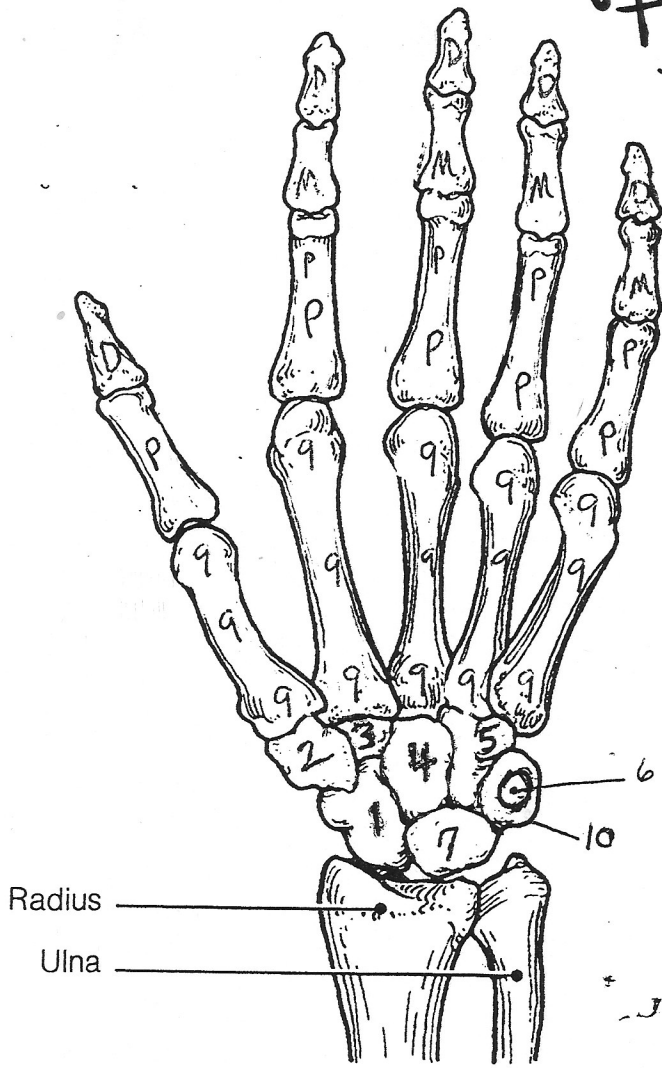


*Olecranon fossa not shown
 (L) Trochlear notch (red)
 (H) Trochlea (blue)
 (M) Radial tuberosity (green)
 (F) Coronoid (yellow)
 (I) Styloid process (2) (orange)
 (B) Lesser tubercle (purple)

lateral epicondyle not shown
 (3) Capitulum (light blue)
 (I) Coronoid process (pink)
 (K) Olecranon process (brown)
 (N) Ulnar notch of radius (red)
 (O) Radial notch of ulna (pink)

medial epicondyle (dark blue)
 (P) medial epicondyle (grey)
 (R) Ulnar notch of radius (green)
 (S) Radial notch of ulna (pink)
 (A) Spine
 (B) Glenoid cavity
 (C) Coracoid process
 (D) Acromion

Hand

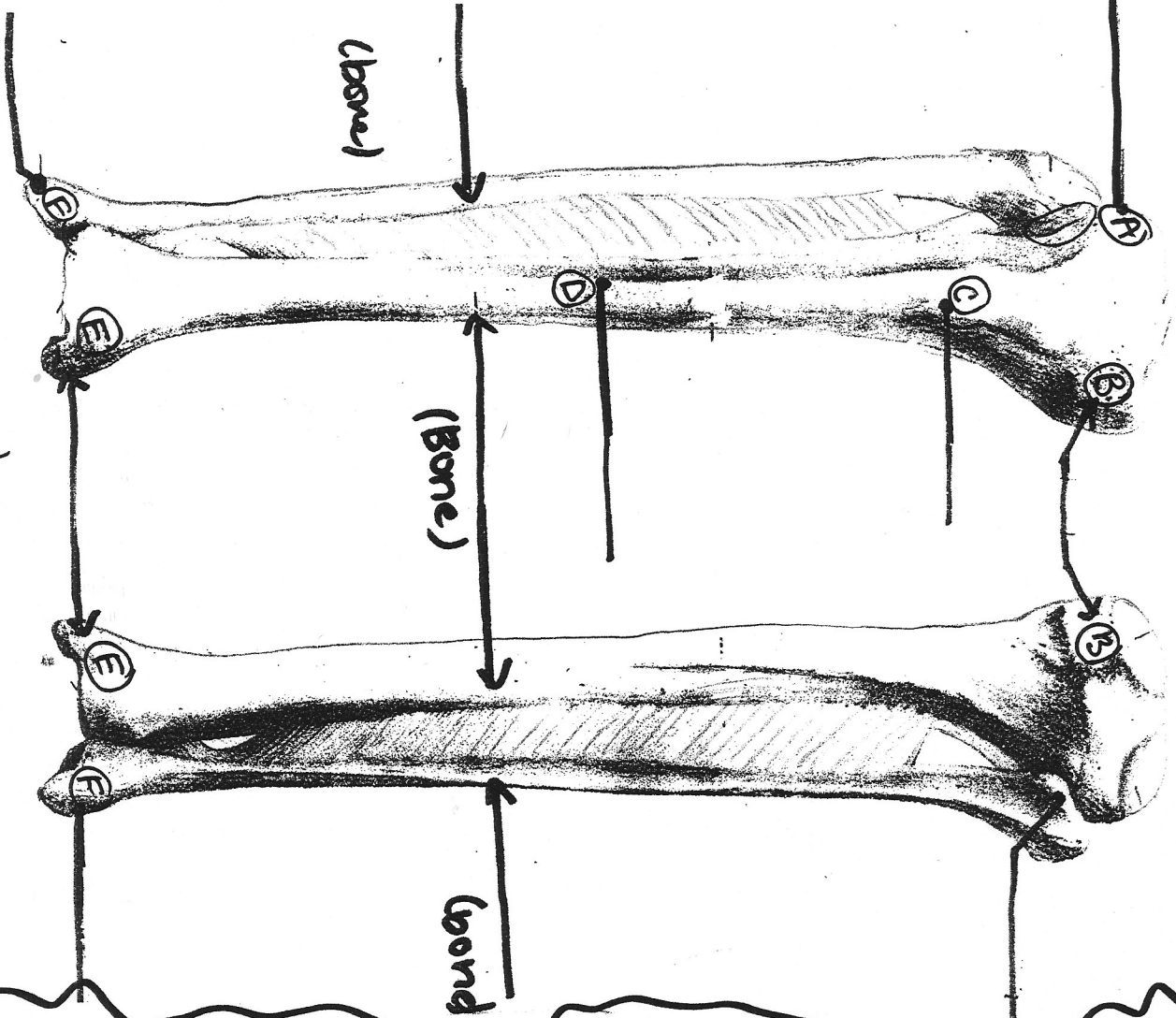


PHALANGES: Use following:
 Distal Phalanges = PINK (D)
 Middle Phalanges = GREEN (M)
 Proximal Phalanges = BLUE (P)

Radius
 Ulna

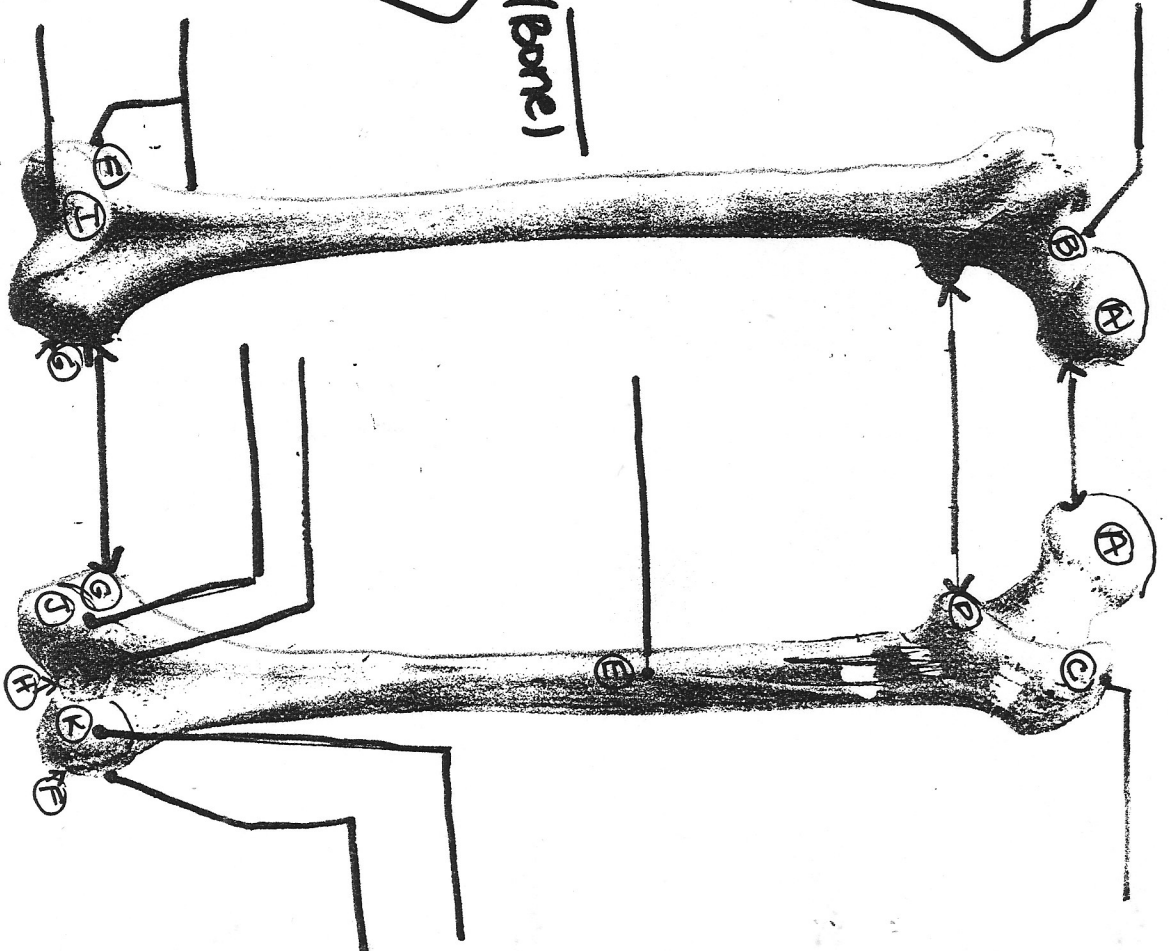
COLOR	#	LABEL
RED	1	SCAPHOID
ORANGE	2	TRAPEZIUM
YELLOW	3	TRAPEZOID
GREEN	4	CAPITATE
BLUE	5	HAMATE
INDIGO	6	PISIFORM
VIOLET	7	LUNATE
* See above	8	PHALANGES
WHITE	9	METACARPALS
PINK	10	TRIQUETRAL

Tibia & Fibula:



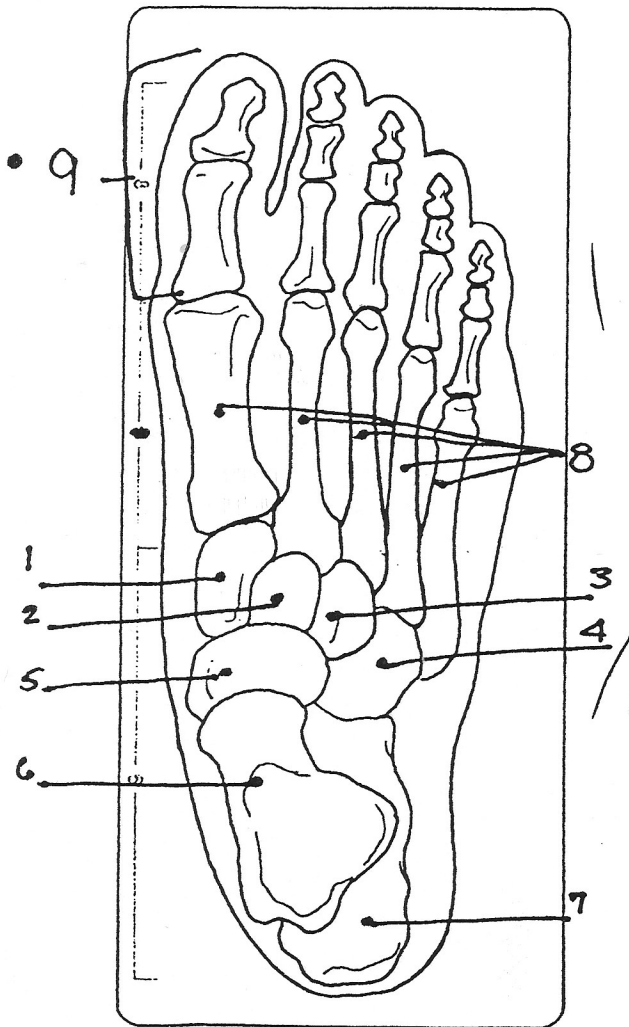
- (a) Anterior view
- (A) lateral condyle (green)
 - (B) medial condyle (blue)
 - (C) tibial tuberosity (blue)
 - (D) anterior crest (yellow)
 - (E) medial malleolus (red)
 - (F) lateral malleolus (orange)
- (b) Posterior view

Femur



- (b) Femur (thigh bone)
- Anterior view
- (A) head (light blue)
 - (B) neck (dark blue)
 - (C) greater trochanter (red)
 - (D) lesser trochanter (orange)
 - (E) linea aspera (yellow)
- Posterior view
- (F) lateral epicondyle (purple)
 - (G) medial epicondyle (green)
 - (H) intercondylar fossa (yellow)
 - (I) patella surface (pink)
 - (J) medial condyle (blue)
 - (K) lateral condyle (red)

.. Foot ..



Label the bones of the foot. Color the bones different colors

• For the phalanges (#9), use the following:

distal = pink
middle = green
proximal = blue

Color	#	Label
red	1	
orange	2	
yellow	3	
green	4	
blue	5	
purple	6	
light blue	7	
black	8	